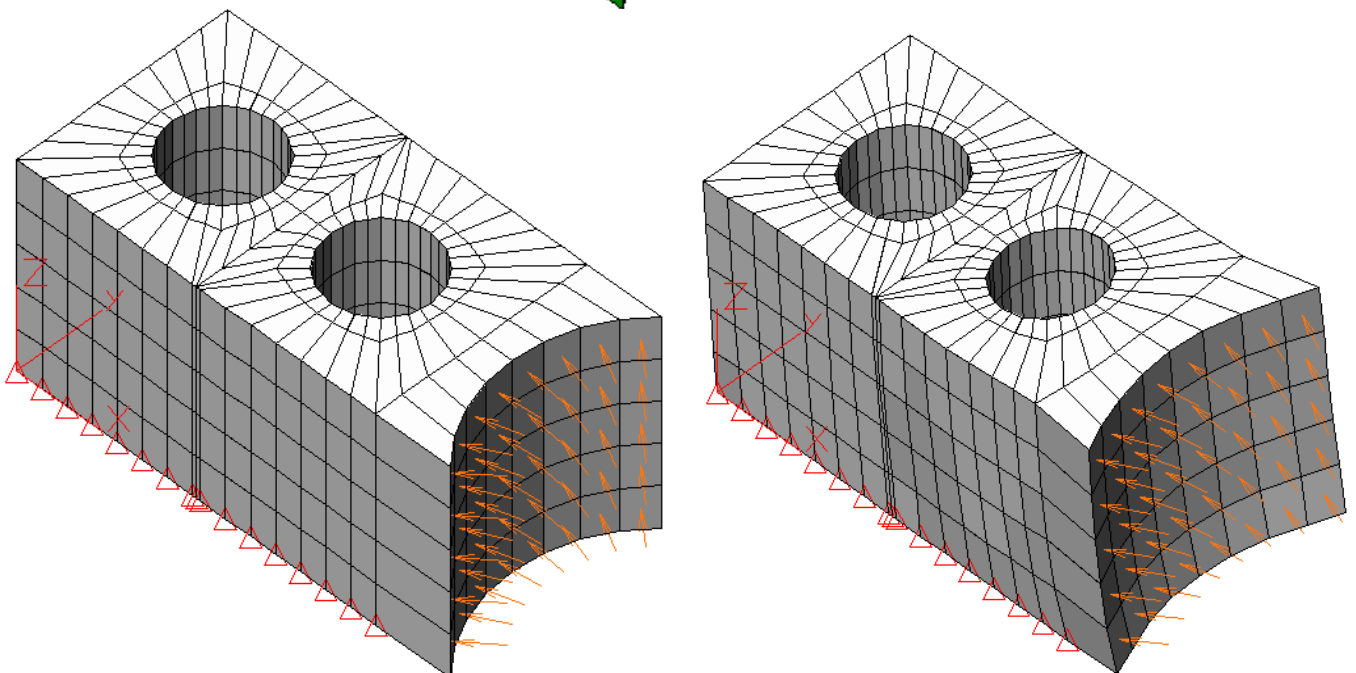
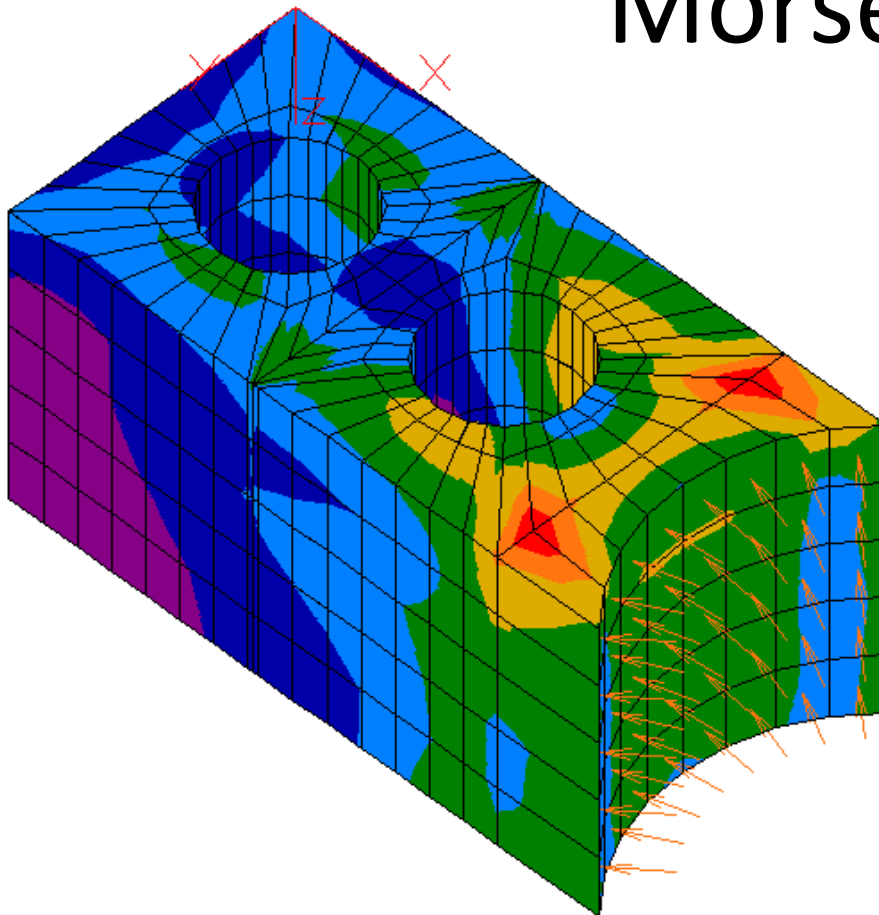
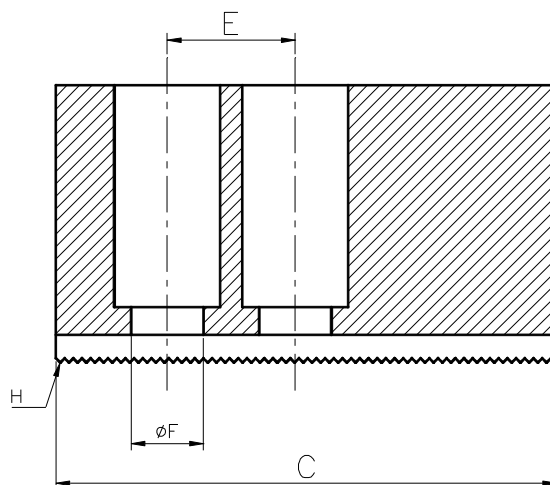
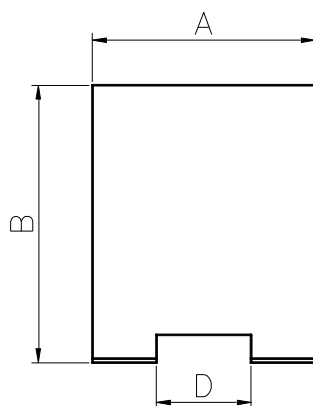
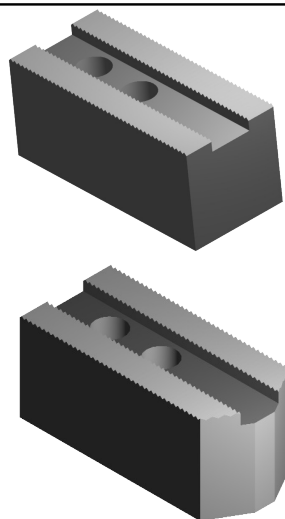


REDINOX s.r.l.

Via dei Marinoni
27040 Cigognola PV
P.IVA:01809310186
Tel: 0385 780256
Fax: 0385 250632
E-mail: redinox@tiscali.it

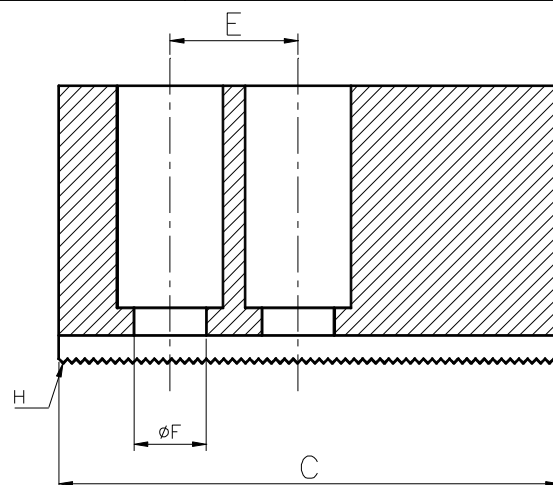
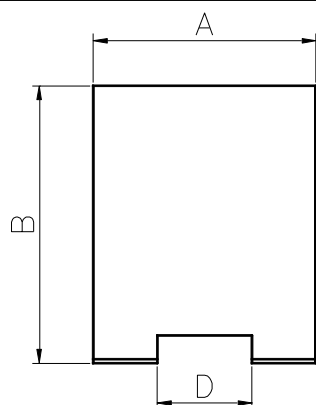
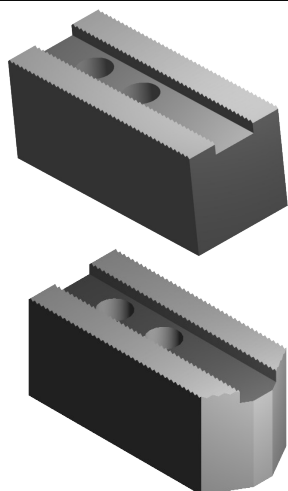
Catalogo Morsetti Teneri 2010





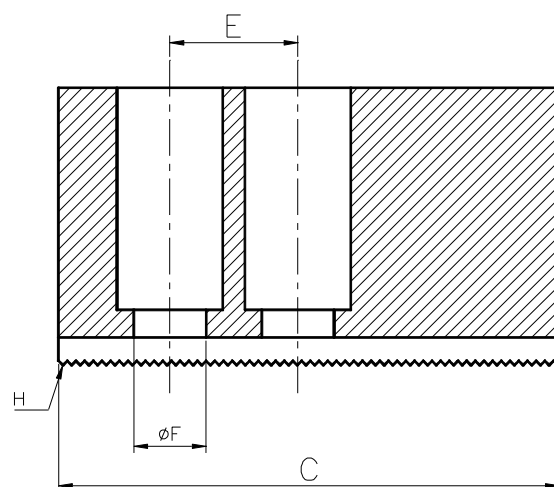
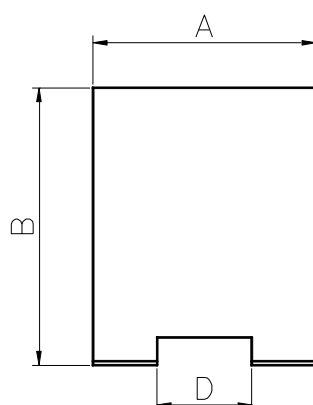
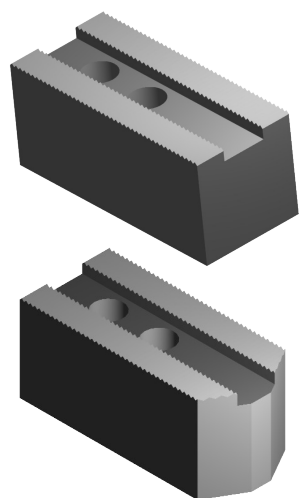
CODICE	AUTOCENTRANTE	A	B	C	D _{H7}	E	ØF	Hx90°
1.01	125	30	30	60	12	16	9	01/01/ 16
2.01	160	35	35	70	14	16	11	1/16
2.02	160	35	35	80	14	16	11	1/16
2.03	160	35	50	70	14	16	11	1/16
2.04	160	35	60	70	14	16	11	1/16
2.05	160	35	80	70	14	16	11	1/16
2.06	160	35	35	100	14	16	11	1/16

Nota:Questi modelli possono essere montati su autocentranti di tipo:
Autoblok, Mpt, Cmp, Forkardt, Rohm, Smw.



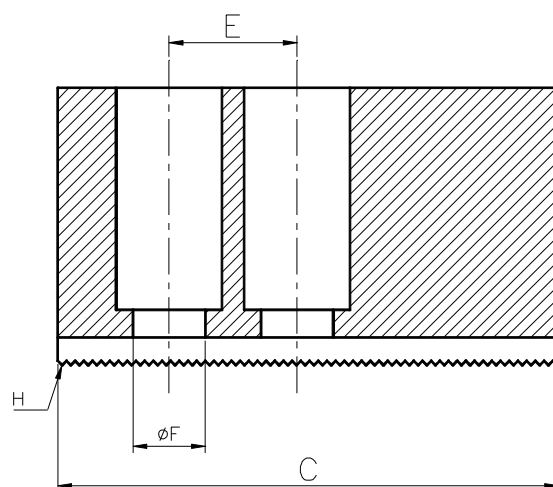
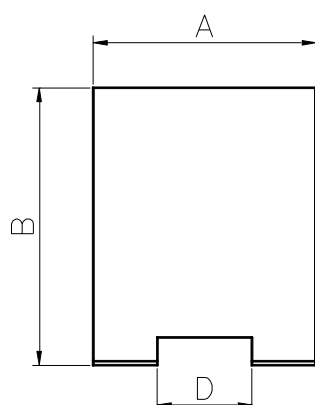
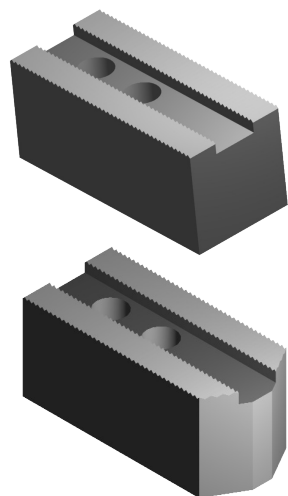
CODICE	AUTOCENTRANTE	A	B	C	D _{H7}	E	ØF	Hx90°
3.01	200-220	40	40	70	17	23	13	1/16
3.02	200-220	40	40	90	17	23	13	1/16
3.03	200-220	40	40	110	17	23	13	1/16
3.04	200-220	40	50	90	17	23	13	1/16
3.05	200-220	40	60	90	17	23	13	1/16
3.06	200-220	40	80	90	17	23	13	1/16
3.07	200-220	40	100	90	17	23	13	1/16
3.08	200-220	40	120	90	17	23	13	1/16
3.09	200-220	50	80	90	17	23	13	1/16
4.01	200	40	40	90	14	20	11	1/16

Nota: Questi modelli possono essere montati su autocentranti di tipo:
Autoblok, Mpt, Cmp, Forkardt, Rohm, Smw.



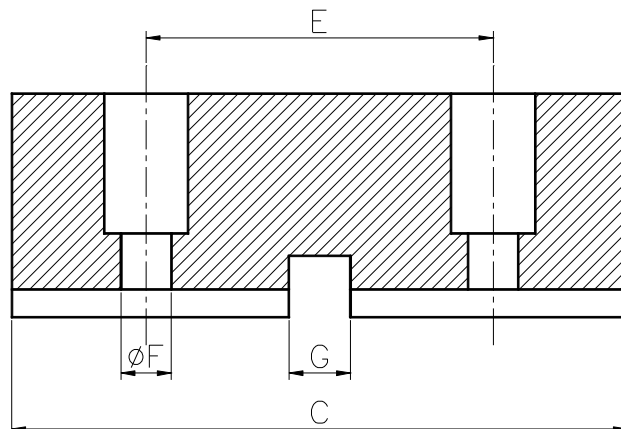
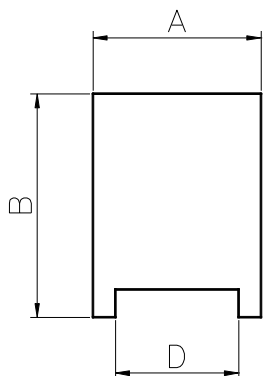
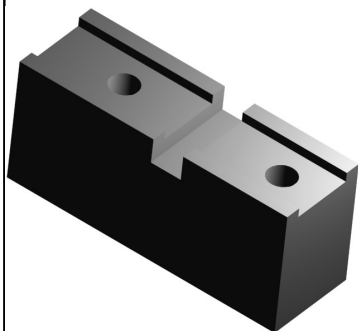
CODICE	AUROCENFRANTE	A	B	C	D _{H7}	E	ØF	Hx90°
5.01	250	45	45	110	21	30	17	1/16
5.02	250	45	45	125	21	30	17	1/16
5.03	250	40	60	110	21	30	17	1/16
5.04	250	40	80	110	21	30	17	1/16
5.05	250	50	60	110	21	30	17	1/16
5.06	250	50	80	110	21	30	17	1/16
5.07	250	50	80	120	21	30	17	1/16
5.08	250	50	100	110	21	30	17	1/16
5.09	250	50	120	110	21	30	17	1/16
5.10	250	50	50	110	21	30	17	1/16
6.01	315	50	50	125	21	30	17	1/16
6.02	315	50	60	125	21	30	17	1/16
6.03	315	50	80	125	21	30	17	1/16
6.04	315	50	100	125	21	30	17	1/16
6.05	315	50	120	125	21	30	17	1/16

Nota:Questi modelli possono essere montati su autocentranti di tipo:
Autoblok, Mpt, Cmp, Forkardt, Rohm, Smw.



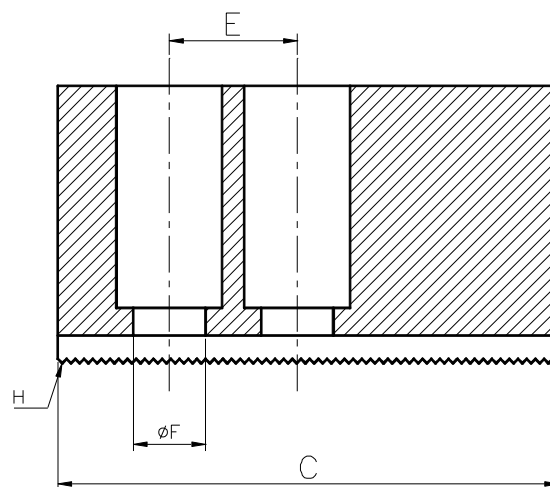
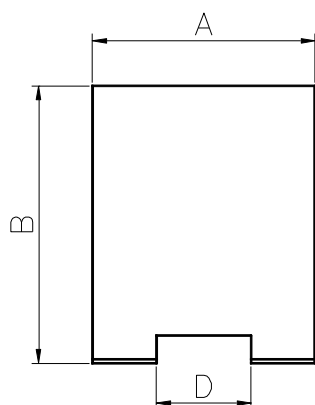
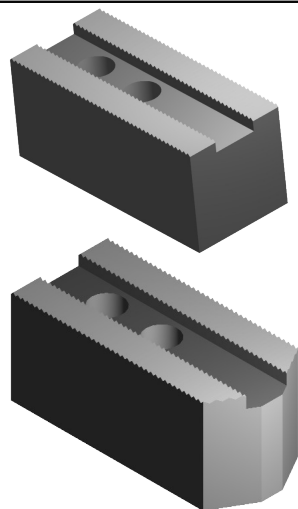
CODICE	AUTOCENTRANTE	A	B	C	D _{H7}	E	ØF	Hx90°
7.01	400	60	60	140	21	30	17	1/16
7.02	400	60	80	140	21	30	17	1/16
7.03	400	60	100	140	21	30	17	1/16
7.04	400	60	120	140	21	30	17	1/16

Nota:Questi modelli possono essere montati su autocentranti di tipo:
Autoblok, Mpt, Cmp, Forkardt, Rohm, Smw.

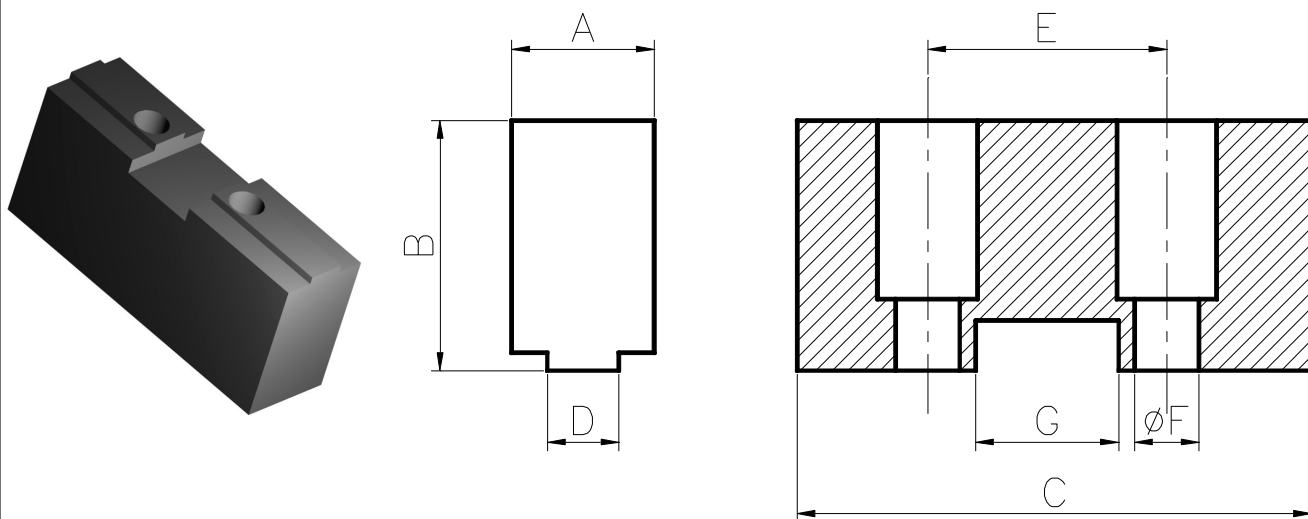


CODICE	AUTOCENTRANTE	A	B	C	D _{H7}	E	ØF	G _{H7}
8.01	130	20	25	60	16	36	7	9
9.01	160	25	30	70	18	40	7	9
10.01	180-200	30	40	90	20	53	9	10
11.01	230-250	30	40	110	22	62	9	11
12.01	270	35	50	120	25	68	11	12
13.01	310	35	50	135	28	76	13	12
14.01	350	40	70	160	30	92	13	12

Nota: Morsetti teneri per autocentranti manuali

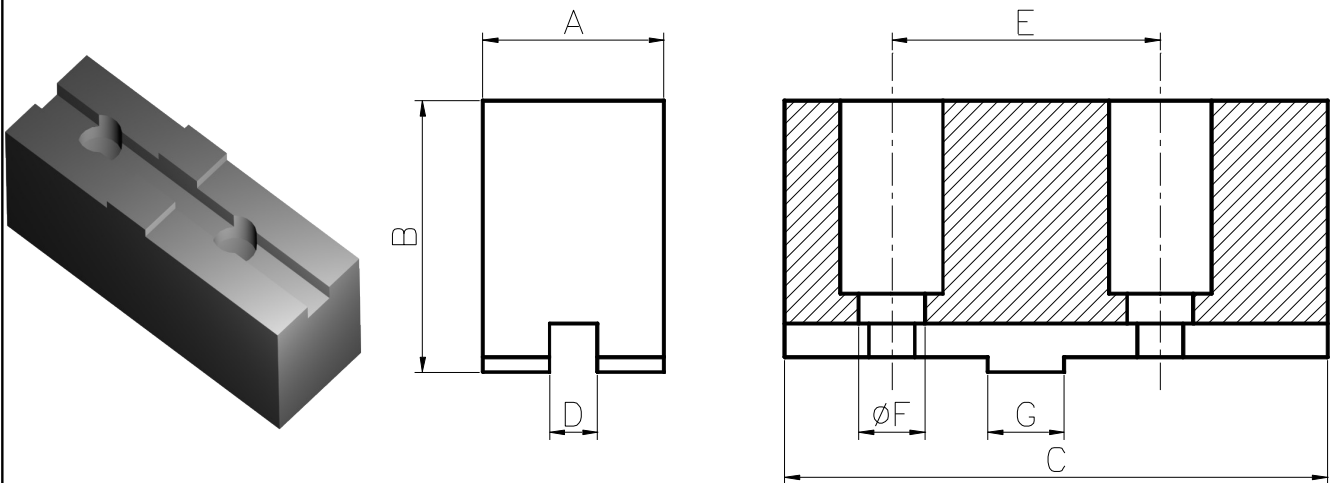


CODICE	AUTOCENTRANTE	A	B	C	D _{H7}	E	ØF	Hx60°
15.01	160	30	40	70	12	20	11	1.5
15.02	160	30	50	70	12	20	11	1.5
15.03	160	30	60	70	12	20	11	1.5
16.01	200	35	40	95	14	25	13	1.5
16.02	200	35	50	95	14	25	13	1.5
16.03	200	35	60	95	14	25	13	1.5
16.04	200	35	80	95	14	25	13	1.5
17.01	250	40	40	110	16	30	13	1.5
17.02	250	40	50	110	16	30	13	1.5
17.03	250	40	60	110	16	30	13	1.5
17.04	250	40	80	110	16	30	13	1.5
17.05	250	40	100	110	16	30	13	1.5
18.01	305	50	50	130	18	30	15	1.5
18.02	305	50	80	130	18	30	15	1.5
18.03	305	50	100	130	18	30	15	1.5
43.01	380	60	60	165	22	43	21	1.5



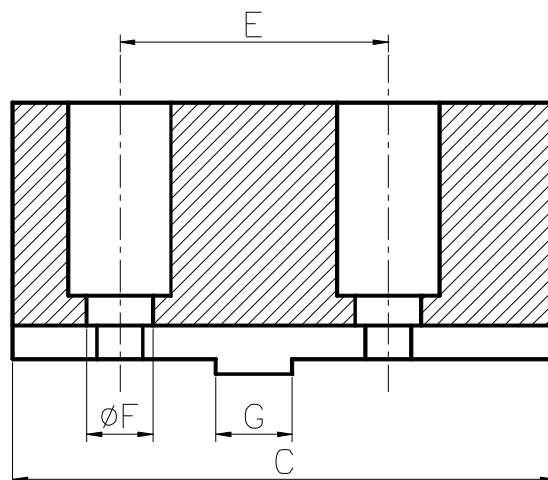
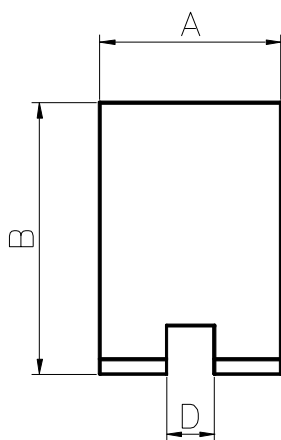
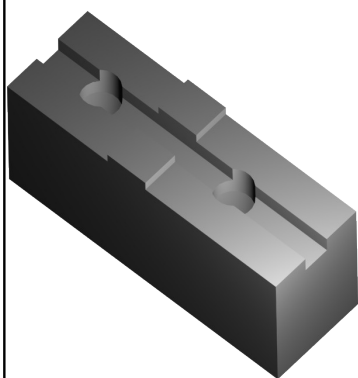
CODICE	AUTOCENTRANTE	A	B	C	D _{H7}	E	ØF	G _{H7}
19.01	85	15	20	47	8	19	5	12
20.01	105	15	25	53	8	19	6	12
21.01	130	20	30	62	10	22.2	7	14
22.01	160	20	35	72	10	33.5	9	20
23.01	190-200	25	40	85	10	33.5	9	20
24.01	230	25	40	100	10	39.2	9	20
25.01	250-270	30	50	110	12	45.5	9	22
26.01	310-350	30	60	130	14	61	13	28

Nota: Morsetti teneri per autocentranti manuali



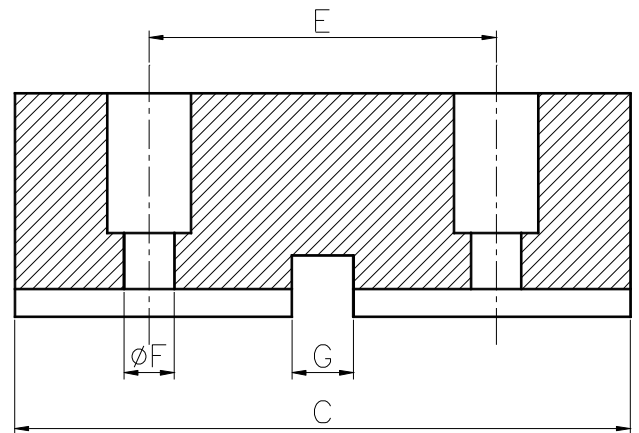
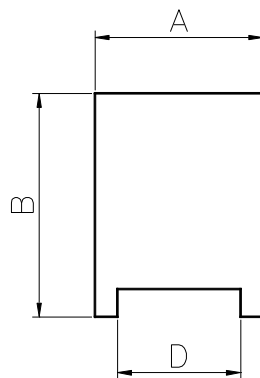
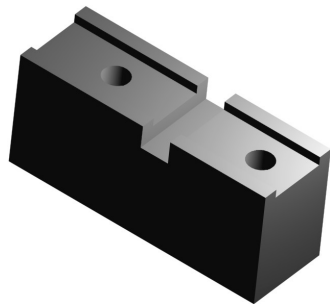
CODICE	AUTOCENTRANTE	A	B	C	D _{H7}	E	ØF	G _{H7}
27.01	160	25	40	78	7.95	38.1	11	12.69
28.01	200	30	45	90	7.95	44.5	11	12.69
29.01	250	35	50	106	12.71	54	14	19.04
30.01	315	40	60	120	12.71	63.5	14	19.04

Nota: Morsetti teneri per autocentranti manuali



CODICE	AUTOCENTRANTE	A	B	C	DH7	E	ØF	GH7
31.01	100	25	30	53	7.96	24	7	9.47
32.01	125	25	40	62	7.96	32	9	12.67
33.01	160	30	40	74	7.96	38	9	12.67
34.01	200	30	45	87	7.96	44.5	9	12.67
35.01	250	35	50	103	12.72	54	13	19.02
36.01	315	40	60	120	12.72	63.5	13	19.02

Nota: Morsetti teneri per autocentranti manuali



CODICE	AUTOCENTRANTE	A	B	C	D _{H7}	E	ØF	G _{H7}
37.01	100	20	30	50	12	20	7	6
38.01	130	25	35	65	15	20	7	6
39.01	160	25	35	70	16	20	9	6
40.01	200	30	45	90	19	26	9	8
41.01	250	35	50	110	22	32	11	10
42.01	315	40	60	130	27	38	13	12

Nota: Morsetti teneri per autocentranti manuali